

| Explanatory Notes | | Index | |
|----------------------------------|----------------------------------------------------------------------------------------------------------------------------------------------------------------------------------------------------------------------------------------------------------------------------------------------------------------------------------------------------------------------------------------------------------|----------------------------------------|----------------|
| <i>Content</i> | This page contains information on the content of the image file. It does not form part of the original document. | <i>Name of Canada Land</i> | <i>Image #</i> |
| <i>Gaps between page numbers</i> | A scanning process was used to create this file. Blank pages in the original document have not been scanned. As a result, there may be gaps in page numbering. | | |
| <i>Index</i> | The index contained on this page is provided to facilitate navigating through the document. An index is used when the original document affects several Canada Lands or when the original document contains large format plans (larger than ledger size). The Canada Lands name used in the index is identical to the name that was used in the original document and may differ from its current usage. | | |
| <i>Hyperlink</i> | Depending on the viewing software you are using, the content in the index may be hyperlinked to the appropriate pages in the document. In those cases, you may access the images by double-clicking the appropriate page number. | <i>Large format plans and sketches</i> | <i>Image #</i> |
| | This file may contain images of large plans or sketches (more than ledger size). You may require a large format size printer to print these plans to scale. | Lake Nares | 27 |

621

DEPT. of INDIAN AFFAIRS
SURVEY BRANCH.

No. 621

Ref.

File. 292.298'

Date May 26th 1913

FIELD NOTES

—OF—

Indian School Reserve

Carcross
Y.T.

7,297298-

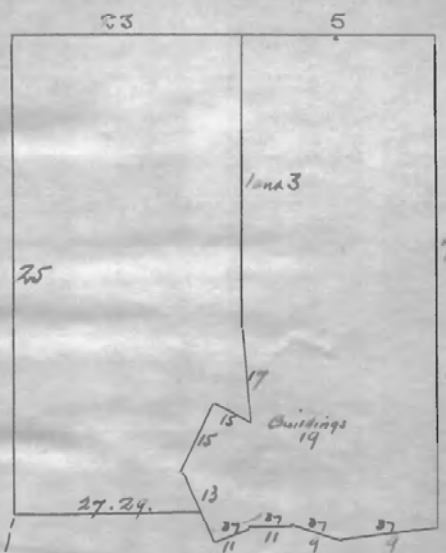
Surveyed by J. B. Craig D.L.S.

Commenced: Oct 4th 1912 Ended: Oct 9th 1912

1912.

FIELD NOTES

INDEX TO PAGES.



Azimuths shown in notes
are to nearest minute only
Report Page 38.

INDEX TO PAGES

NAMES AND DUTIES OF PARTIES EMPLOYED.

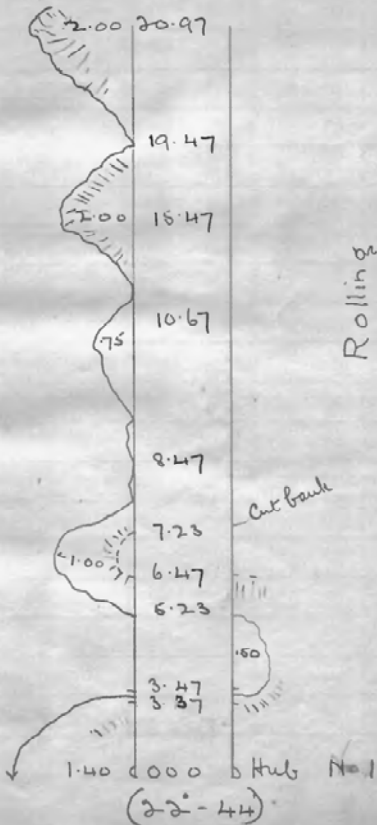
| | |
|-----------------|----------------|
| E. B. Evans | Front chairman |
| Chas Harding | Picketman |
| Fred Charlie | Axeman |
| Tommy Shallow | " |
| Jimmy Ward | " |
| Alfred Ellis | " |
| Henry Adams | " |
| Fred Maclelland | " |
| Harry Vinal | " |

10 7/15/21
1.50
12.50
14.00

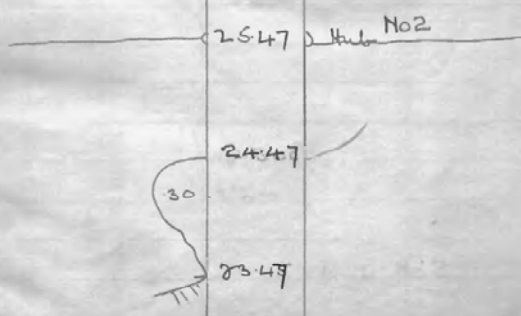
WATER AND DUNE OF BARKER

Notes of Traverse

Poplar and Willows occasional small patches of Spruce up to 610'



Traverse contd



4/10/12

E half of back line

This post replaces
Hub No 3.

20.00

Soplar P B.T. N 60° W

IR
IR

9.50

8.90

7.05

6.80

4.50

3.50

3.40

3.00

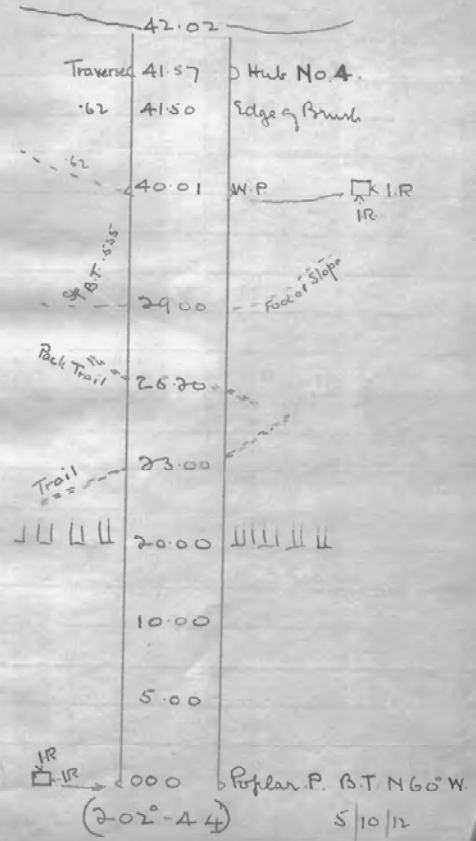
0000 Hub No 2.

(112-44)

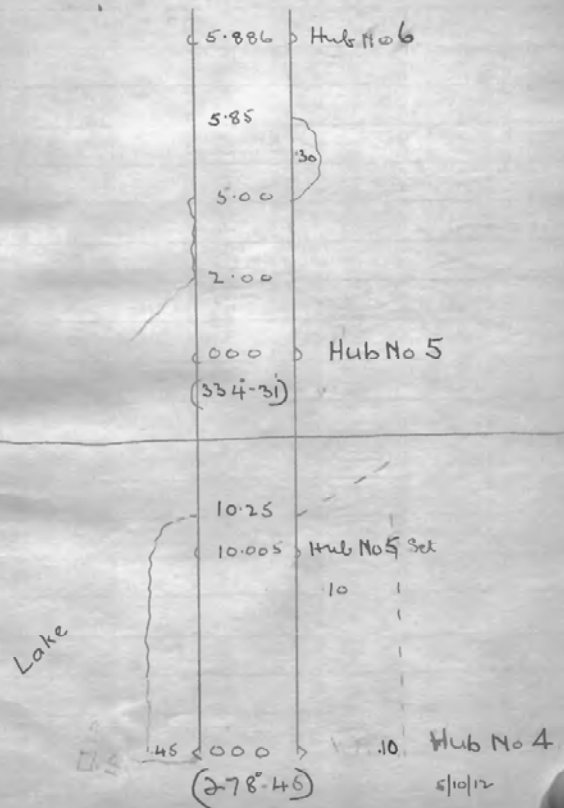
4/10/12

E boundary

Arm of Lake Naves



Traverse of Lake Shore



Traverse, cont'd

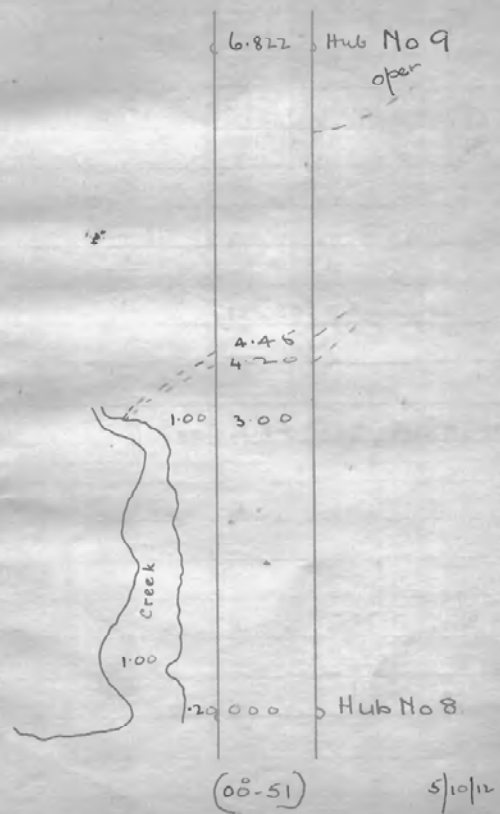
Lake { 2502.602 = Hub No 8
 { 100000 = Hub No 7
 (265-11)

Lake { 5.02 = Hub No 7
 { 0000 = Hub No 6
 (293-31)

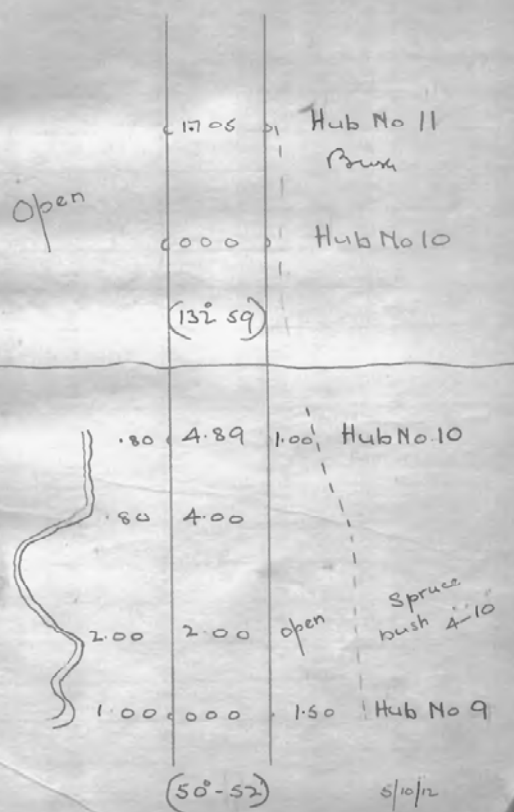
Winter Trail

5/10/12

Traverse contd.



Traverse, cont'd.

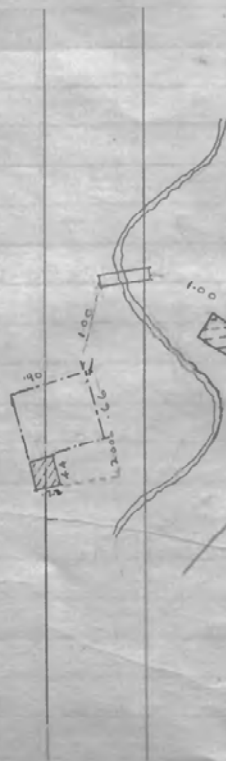


Traverse cont'd

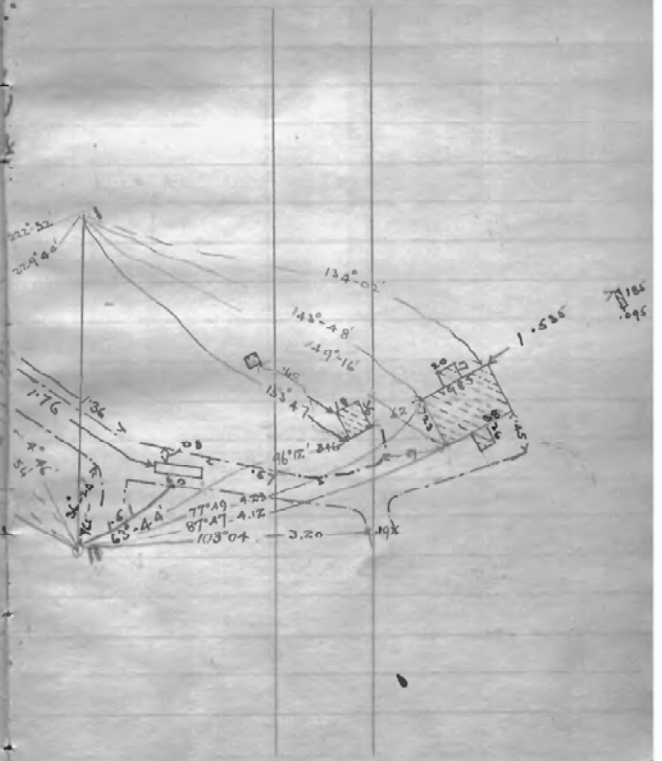


(23-14)

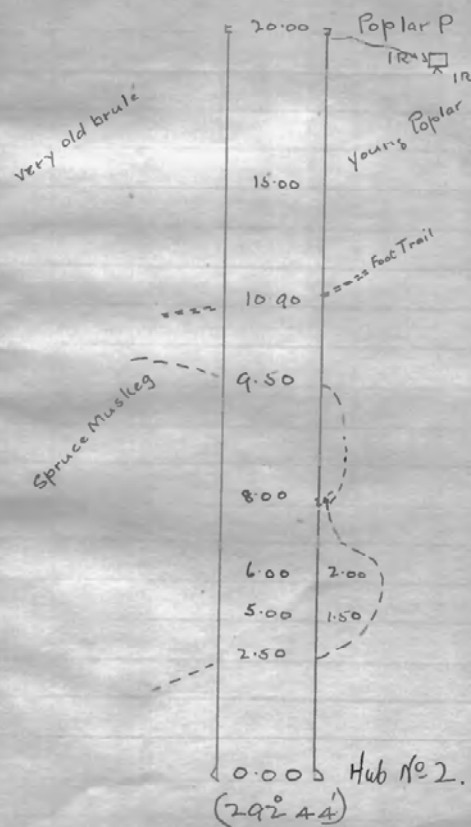
5/10/12



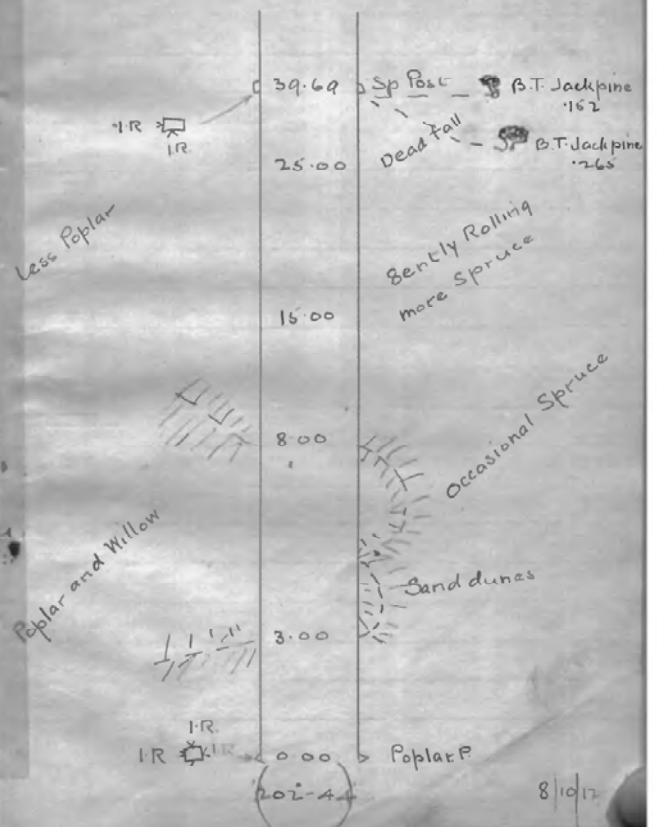
Traverse contd



W. half of Back Line



W. Boundary



Traverse from Hub 8 to Hub 12

1253 - Hub No 8

18.45 - Pinet on point

17.85

16.85

15.85

15.00

Willows

8.90

7.90

7.25

5.15

Dead fall

1. R 3114

(112°-44)

Hub No 12

8/10/12

Soft

Foot of hill

50' drop

Edge bench

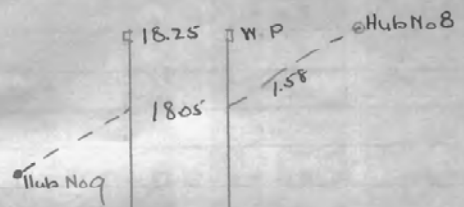
Foot Trail

some Spruce

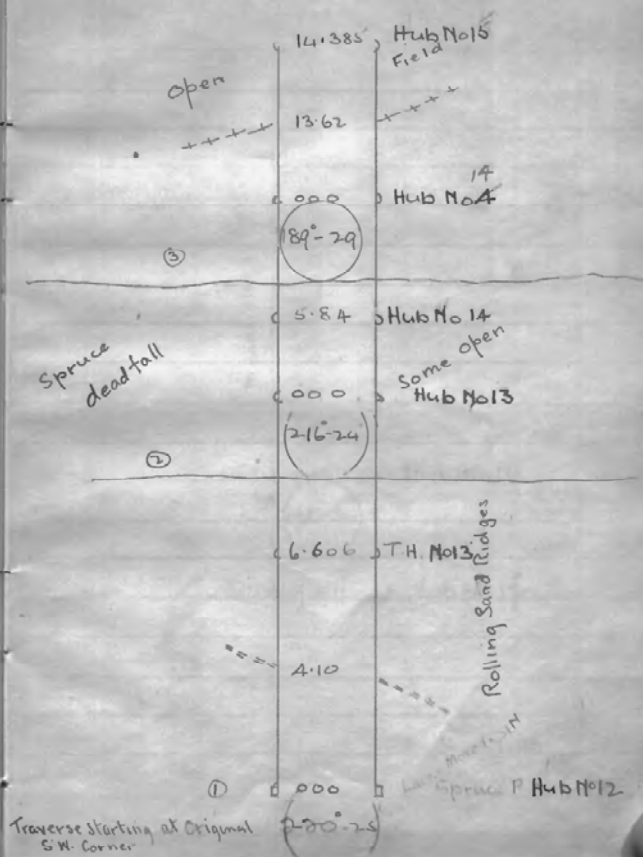
most a. point
 112-41

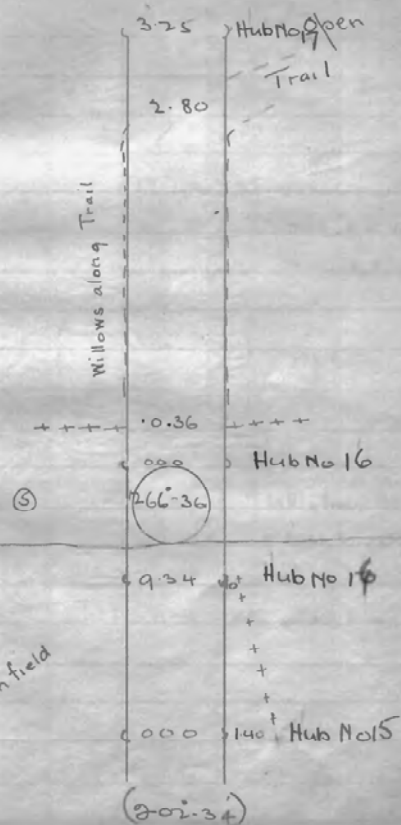


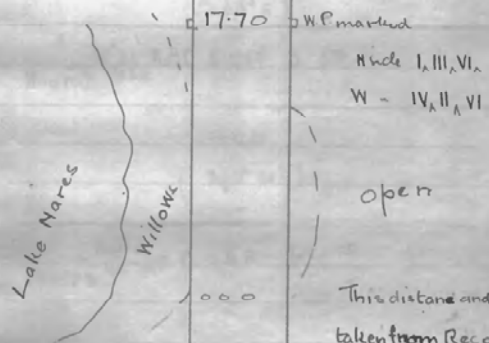
W. half of S. boundary



□ 0.00 □ Spruce Post
 (112-41)







(211.08)

E half S boundary

Hub No 8 $\frac{186^{\circ}57'}{156}$ WP 2.602 IR.

0.00
(268°11')

Hub No 7 $\frac{189^{\circ}21'}{1563}$ WP 5.965 IR.

0.00
(293°31')

Hub No 6 $\frac{124^{\circ}01'}{156}$ WP 5.65 IR.

0.00
(334°31')

Hub No 5 $\frac{216^{\circ}36'}{1713}$ WP 9.55 IR.

IR.
IR.

Hub No 4 $\frac{1560}{(278^{\circ}45')}$ WP 0.00 E bdy 202' 44'

Department of the Interior,

INTERNATIONAL BOUNDARY SURVEYS,

TRAFALGAR BUILDING,

Ottawa, Canada, 20th May 1913.

The Secretary,
Department of Indian Affairs,
Ottawa, Ontario.

Sir:
I beg to report as follows with reference to the survey of the site for the Choctla Indian School at Carcross, Y. T.

Acting under telegraphic instructions dated 31st August 1912, received from your Department through Mr. Simpson, Secretary/Accountant at the Dominion Observatory, I stopped off at Carcross on October 4th on my way out from Dawson, and surveyed the site for the Indian school there as per plan and notes herewith.

The site is almost ideal for such a school, though the soil is rather light for agriculture, and is almost pure sand in the northwestern portion. The school fronts on Lake Hares, and a good creek runs through the centre of the property. There is plenty of timber for ordinary building purposes, and there is a considerable quantity of dry wood available for fuel.

The school itself, recently built, is a credit both to the Government and to the Mission and appears to be splendidly laid out and equipped.

I have the honor to be,

Sir,

Your obedient servant,

J. D. C.
D.L.S.

NOTE.—This certificate is not to be filled in before a request to that effect has been received from the Department of Indian Affairs.

CERTIFICATE.

I, John Davidson Craig
of the City of Ottawa, County of
Carleton, Province of Ontario,
Commissioner
Land Surveyor, hereby certify that the foregoing field notes and
accompanying plan are correct and are prepared from actual surveys
made under my personal supervision.

J.D. Craig
L.S.

Dated this 29th day of May 1913.

