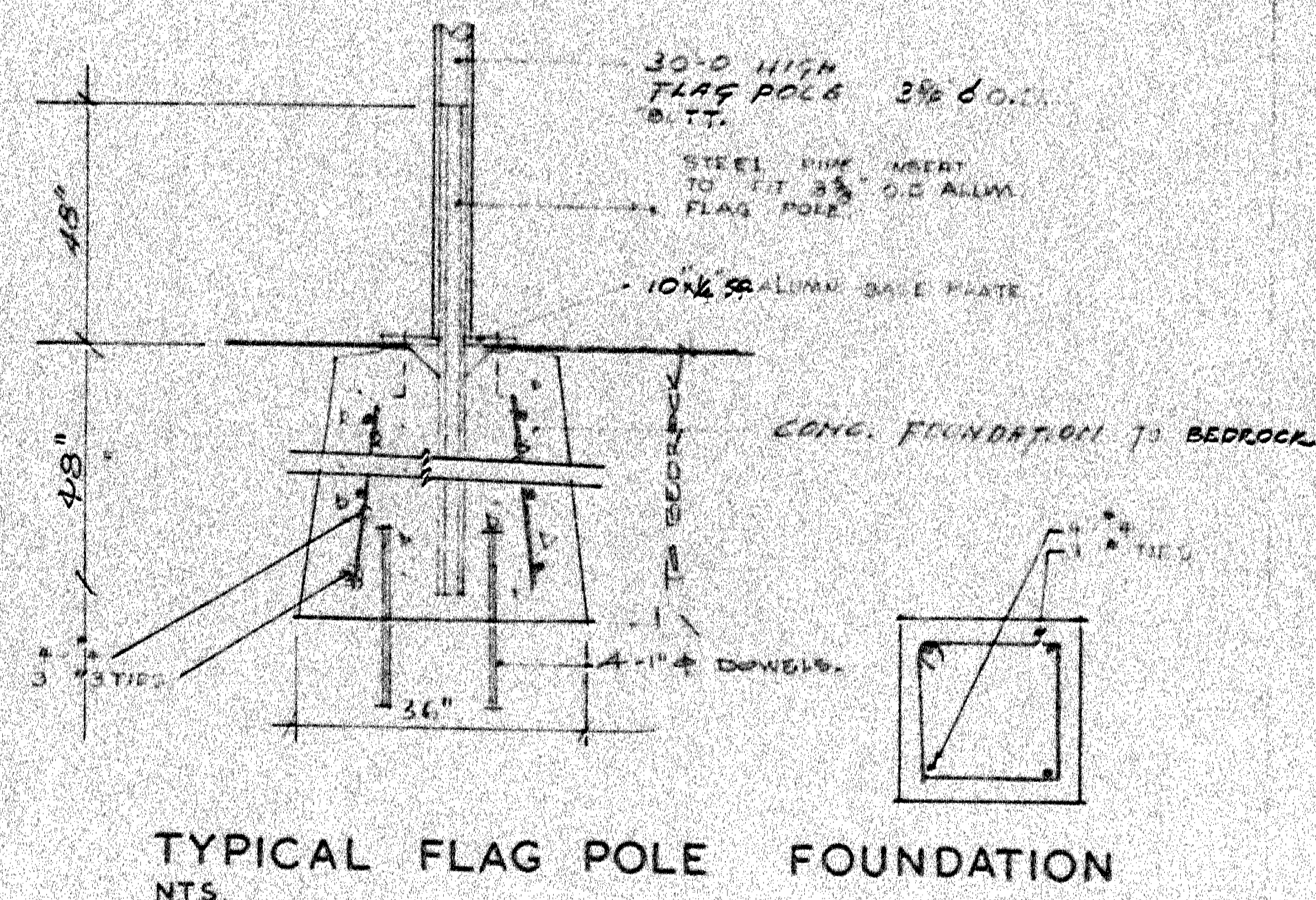


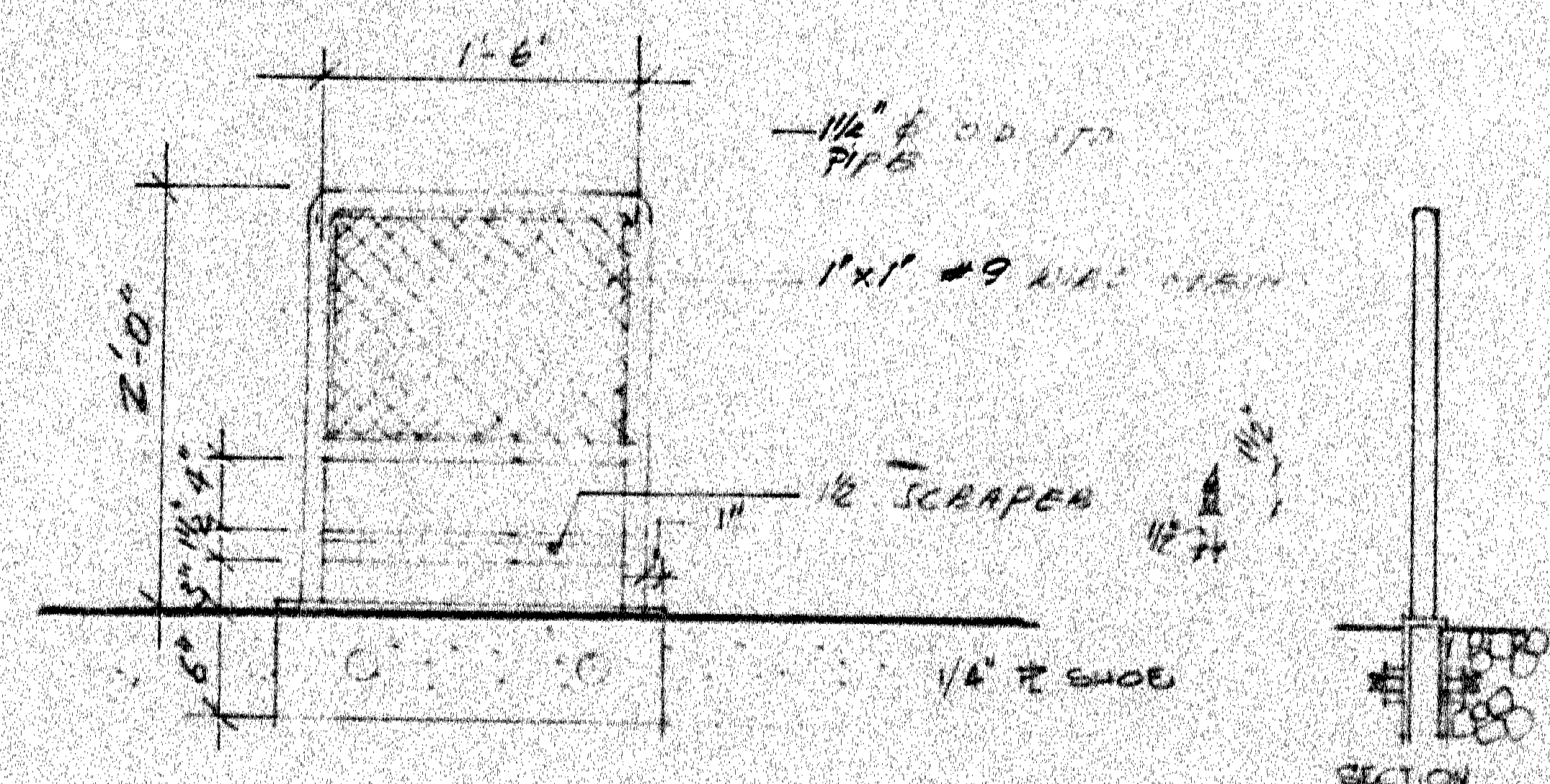
A-10
MAG. DETAILS.

REF. or DRAWING No. 6-9-11

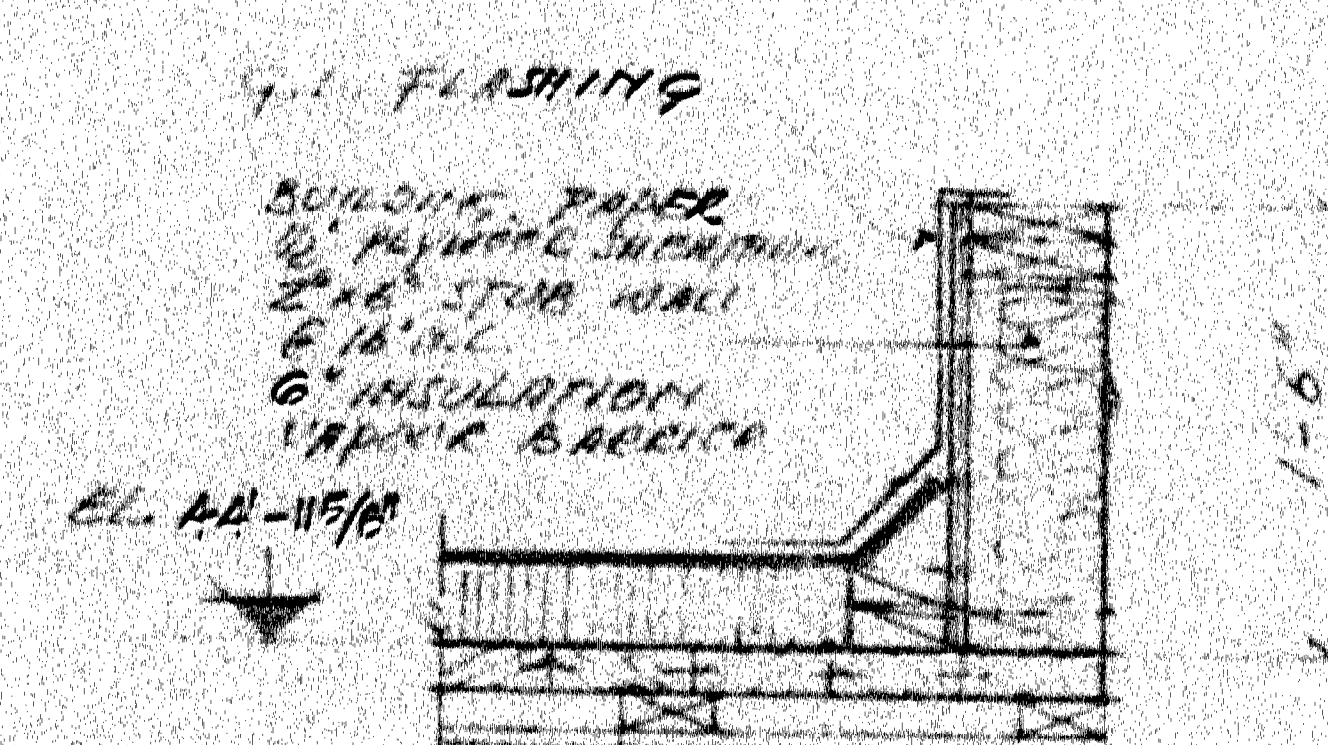
DETAILS CAMBRIDGE BAY, N.Y., SCHOOL



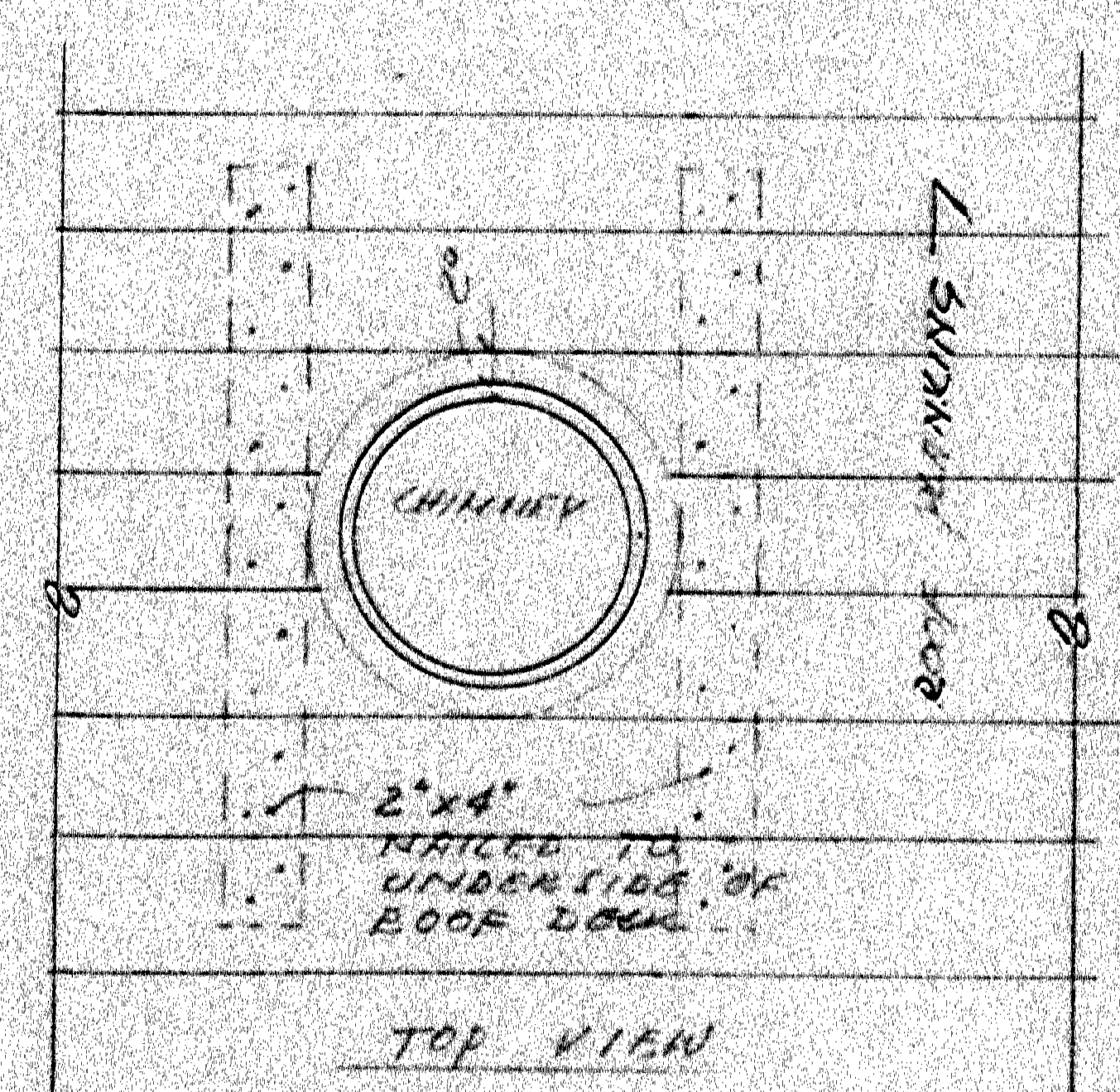
TYPICAL FLAG POLE FOUNDATION
NTS



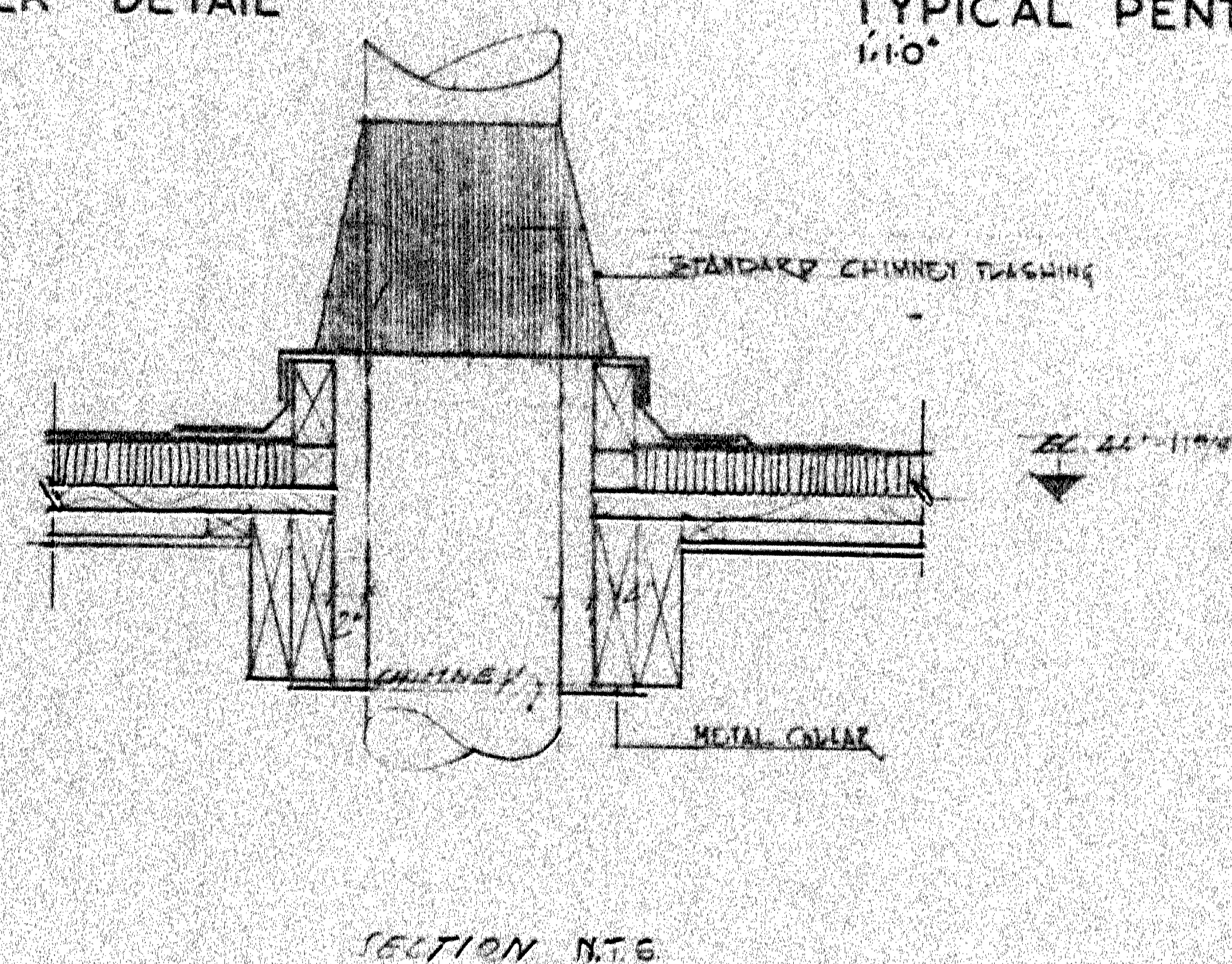
TYPICAL FOOT SCRAPER DETAIL



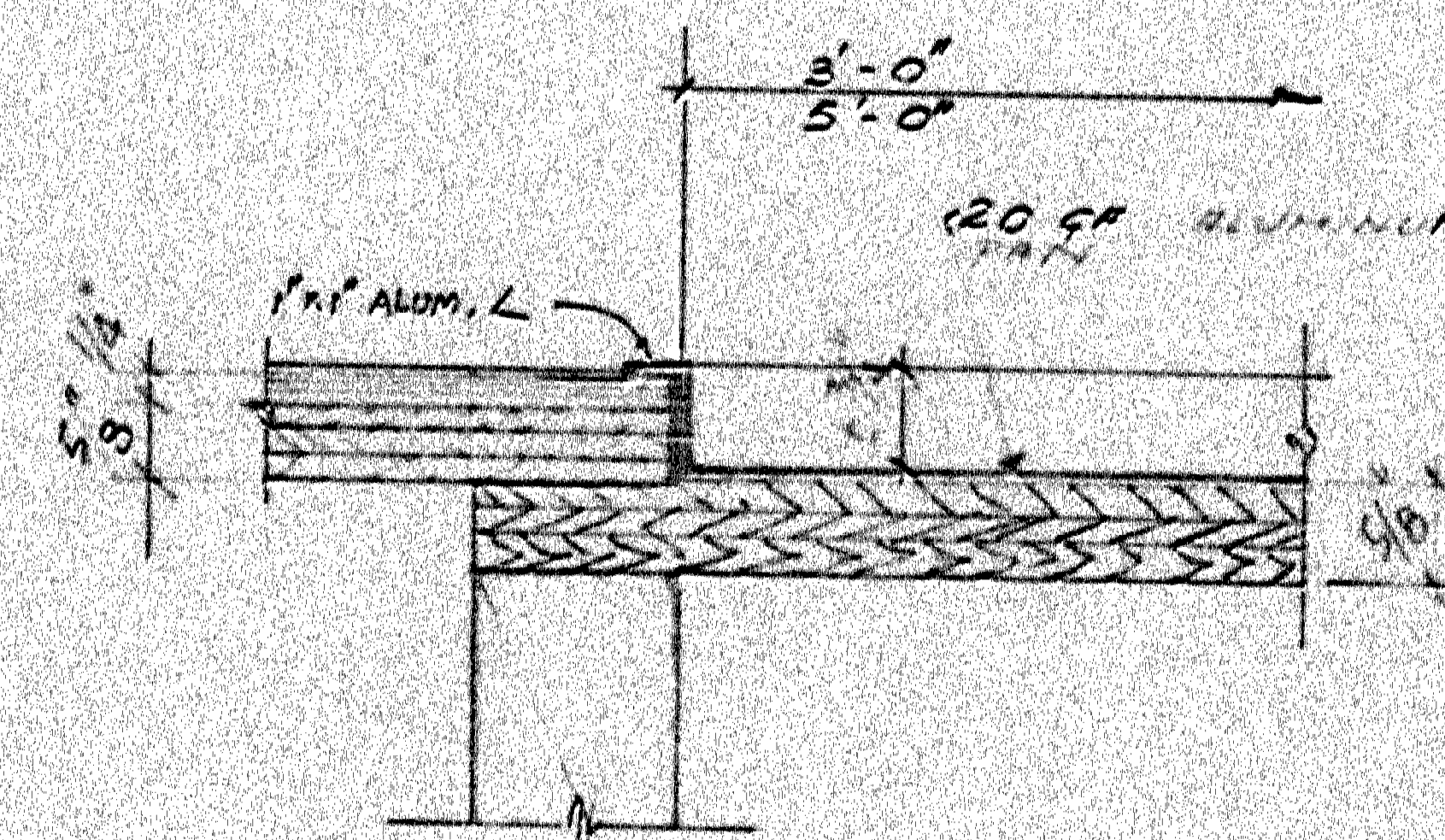
TYPICAL PENTHOUSE CURB DETAIL



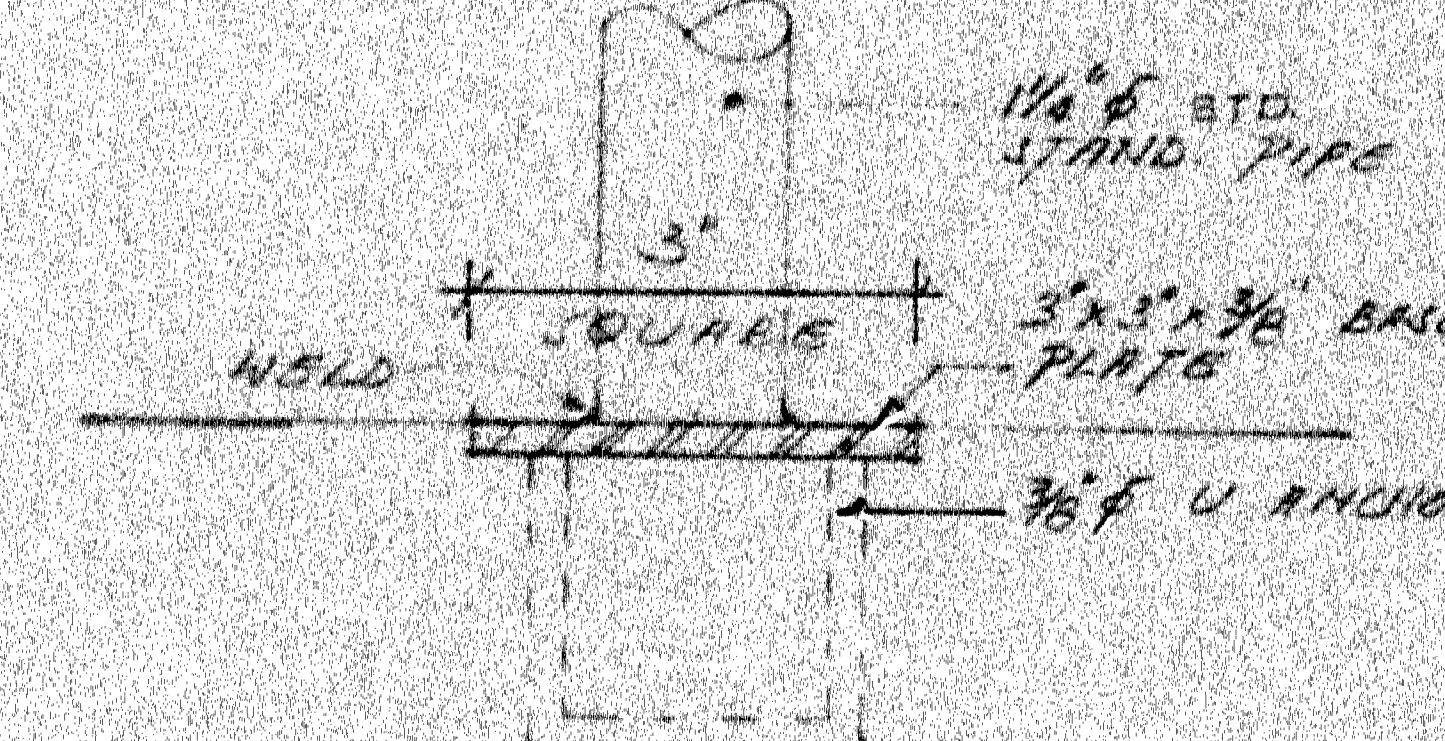
TYPICAL CHIMNEY ROOF OPENING



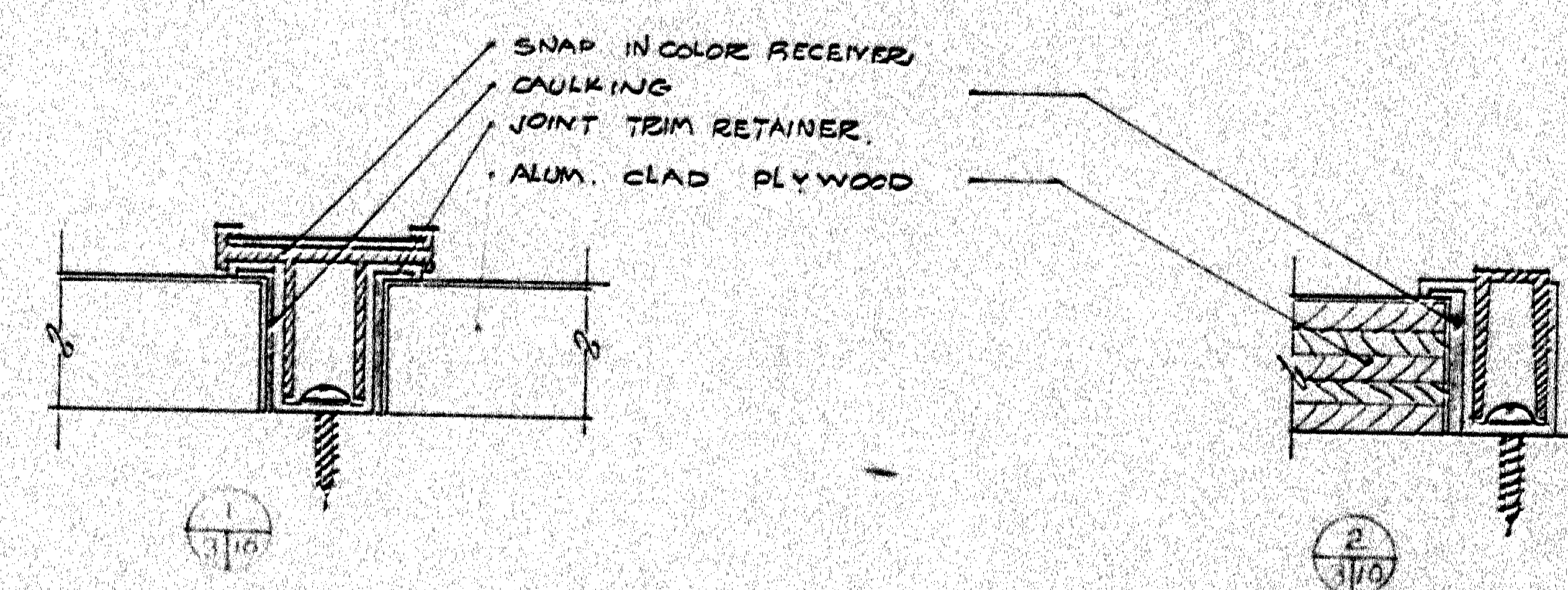
SECTION N.T.6



TYPICAL MAT SINK DETAIL
112 FS.



TYPICAL HAND RAIL
BASE & WALL DET.
1/2 FS



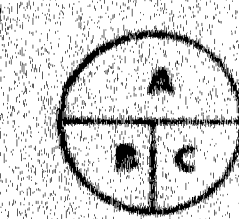
TYPICAL ALUMINUM PANEL CENTRE & ENDS DETAILS



Department of
Public Works

Building Construction
Branch.

A. K. MILLS chief architect
A. E. COOK district architect



A. Detail no.
B. Location dwg
C. Drawing no.

date	revisions

Job title:
**CAMBRIDGE BAY
N.W.T.**
5 CLASS ROOM SCHOOL

Drawing title:

MISC DETAILS

scale: AS NOTED MAY/67

designed by: **FSP**

drawn by : F.T.

reviewed by : _____

approved by:	A.E.C.

ED 67-4-1

OF 12